

## Inspection at Port of Laden

- Each box must contain no more than 15 mangoes.
- Boxes must have traceability code.
- Mangoes will be inspected for internal and external target and non-target pests.
- A minimum of 149 individual fruits must be inspected from each inspectional unit.

**Note:** If there are less than 149 fruits total in the sampling unit, 100% of the fruit will be inspected.

- MOAF&M will visually inspect each of the 149 fruit for external pests and set aside all suspect fruit for internal inspection.
- MOAF&M will select a minimum of 35 fruits for internal inspection. If the total number of suspect fruits set aside is less than 35, additional fruits will be randomly selected until a total of 35 fruits is reached. Suspect fruit will be cut and inspected, or a minimum of 35 fruits for internal quarantine pests
- Each consignment must be accompanied by a Phytosanitary Certificate issued by MOAF&M.



Ministry of Agriculture, Fisheries & Mining  
PLANT QUARANTINE/PRODUCE INSPECTION BRANCH

## PLANT QUARANTINE OFFICES

### Plant Quarantine Main Office

193 Old Hope Road, Kingston 6, Jamaica  
**Tel:** (876) 977-0637 | **Fax:** (876) 977-6992

### Norman Manley International Airport Office

Agricultural Export Complex  
Norman Manley Int'l Airport  
Kingston, Jamaica

**Tel:** (876)924-8906 | **Fax:** (876)924-8907

### Sangster's International Airport

Agricultural Export Complex  
Montego Bay, St. James, Jamaica  
**Tel :**(876)940-4146 | **Fax:** (876) 940-5661

**Website:** [www.moa.gov.jm](http://www.moa.gov.jm)

**Email:** [ppq@moa.gov.jm](mailto:ppq@moa.gov.jm)

© 2023 by the Ministry of Agriculture,  
Fisheries & Mining, Jamaica  
Designed by the Communication & Public Relations Unit

# Exporting Mangoes to the USA



# Mangoes may be imported into the continental United States from Jamaica only under the following conditions:

The mangoes:

- Must** be grown on farms that are registered with the NPPO of Jamaica - the Plant Quarantine Produce Inspection Branch
- Must** be imported in **commercial consignments** only
- May be treated with abroad-spectrum pre- or post-harvest fungicidal application for diseases
- Must** be treated for fruit flies by irradiation with a minimum absorbed dose of 150 Gy
- Must** be transported, from the farm to the packing house, in a covered vehicle in bins covered with insect-proof mesh to prevent infestation of fruit flies.

## Responsibilities of Exporters

- All packing houses intending to ship commodities to the United States for irradiation treatment must be individually registered and approved by MOAF&M.
- Each crate of fruits must be labelled indicating the:  
a. name/code of lot

- farm and locality
  - variety
  - date/time of harvesting.
- Immature, scarred, damaged, diseased, over-ripe, rotten and noticeably infested fruits must be placed into a crate distinctly marked 'not for export Discarded fruits must be disposed of in a timely manner
- Mango fruit must be packaged in APHIS-approved pest-proof packaging that remains intact from the packing facility until after the irradiation treatment is complete. The pest-proof packaging must meet weight and size specifications for treatment.
- A sample pallet must accompany each consignment. The sample pallet must:
  - Represent 2% of the total consignment
  - Be comprised of at least one box from each lot in the consignment
  - Be clearly labelled as **"Sample Pallet"**
  - Be placed at the tail gate of the container to facilitate inspection.
- Each consignment may be subject to inspection at the U.S. ports-of-entry

## Target Quarantine Pests and Required Mitigations

Target/ Non-target Pest	Pest Type	Number found	Action
Target pest	Fruit fly ( <i>A. suspensa</i> , <i>A. obliqua</i> )	1 or more	Reject consignment
	Scale Insect ( <i>Coccus moestus</i> )	1 or more	Reject consignment
	Stem End Rot ( <i>Phomopsis mangiferae</i> )	1 or more	Reject consignment
	Bacterial Black Spot ( <i>Xanthomonas campestris</i> pv. <i>Mangiferaeindicae</i> )	1 or more	Reject consignment
Non-Target pest	Other insect pests, excluding Lepidopteran pupae or adults	1	Certify consignment but notify APHIS of the pest
		2 or more	Reject consignment
	Snail, disease, or mite	1 or more	Reject consignment

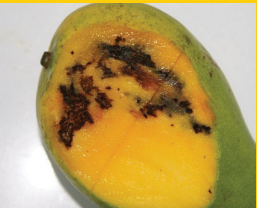
**Note:**  
If a pest or disease is detected at the port of entry in the United States, the shipment of mangoes would be denied entry into the United States and future shipments from the place of production where the mangoes were grown will be prohibited.



**Figure 1:** West Indian Fruit Fly (*Anastrepha obliqua*)  
Photo credit: Alberto Luiz Marsaro Junior



**Figure 2:** Caribbean Fruit Fly (*Anastrepha suspensa*)  
Photo credit: Division of Plant Industry, University of Florida



**Figure 3:** Fruit fly damage on mango, Jamaica



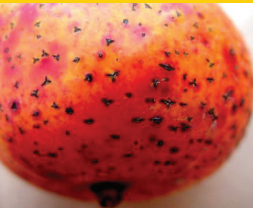
**Figure 4:** Scale Insect (*Coccus moestus*)  
Photo credit: Division of Plant Industry, University of Florida



**Figure 5:** Bacterial black spot on mango leaves.  
Photo credit: A. A. Seif



**Figure 6:** Stem end rot of mango (*Phomopsis mangifera*). Photo credit: Post harvest Science Dept., Agricultural Research Organization, Israel



**Figure7:** *Xanthomonas campestris* pv. *mangiferaeindicae* (Bacterial black spot) on mango fruit.  
Photo credit: A. A. Seif